

# Year 11 Parents Evening

Year 11 Parents Information Evening

16<sup>th</sup> December 2024



# YEAR 11 NEA DATES AND SESSIONS



Date	Subject	Information
17th & 18th March 2025	Geography	Fieldwork is a compulsory part of the GCSE geography and history courses and plays a vital role in helping students apply their classroom learning to real-world contexts.
18th March 2025	Drama	Component 2 – Performance from Text.
24th, 26th, & 27th March 2025	Food & Nutrition	Non examination assessment 2. It is important to note that students attend the day which has been assigned to them. Please ensure your child is in attendance and arrives with the correct ingredients and resources needed to be successful.
25th & 31st March 2025	History	It is imperative that students attend the day which has been assigned to them, as the knowledge gained during these sessions will be crucial for their examination responses.
1st & 2nd April 2025	Art	Component 2 examination.
25th April 2025	French	Speaking and Listening Exam.
TBC	Physical Education	Practical Performance examination.

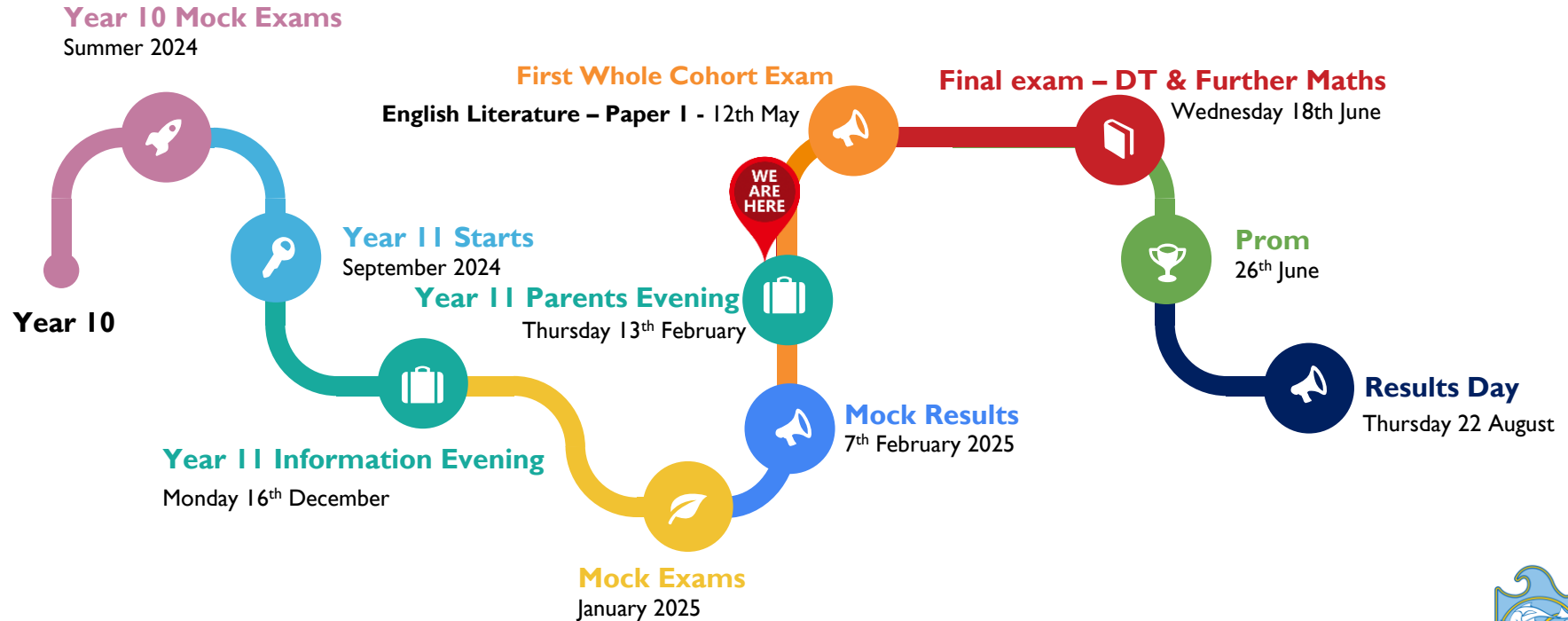
## P6 REVISION WORKSHOPS

**SCIENCE REVISION**  
MONDAYS from 3:30-4:30pm

**MATHEMATICS REVISION**  
WEDNESDAYS from 3:30-4:30pm

**ENGLISH REVISION**  
THURSDAYS from 3:30-4:30pm

# Where are we now?



# HIGH SUPPORT HIGH CHALLENGE



**Working Together**

Expectations



Reality



# HIGH SUPPORT

- Quality Lessons - every second counts
- Every Child Known
- Wellbeing & Mental Health support
- **The Nice Things**
- Reward Trips
- Dedicated Revision Websites and materials
- Mentoring and Support



# HIGH SUPPORT



- Period 6 Sessions
- Breakfast workshops
- Holiday Workshops
- Quiet Year 11 Study Zone at Break Time
- Bespoke individual intervention and support based on Mock results
- **PROM!**
- ... and much much more



# HIGH CHALLENGE



We **will** challenge if standards slip around:

- Punctuality
- Uniform
- Attendance to Lessons / Truancy
- Mobile Phones
- Focus on Studies in & out of school
- Not “Urgent” enough





# YEAR 11 NEA DATES AND SESSIONS



Date	Subject	Information
17th & 18th March 2025	Geography	Fieldwork is a compulsory part of the GCSE geography and history courses and plays a vital role in helping students apply their classroom learning to real-world contexts.
18th March 2025	Drama	Component 2 – Performance from Text.
24th, 26th, & 27th March 2025	Food & Nutrition	Non examination assessment 2. It is important to note that students attend the day which has been assigned to them. Please ensure your child is in attendance and arrives with the correct ingredients and resources needed to be successful.
25th & 31st March 2025	History	It is imperative that students attend the day which has been assigned to them, as the knowledge gained during these sessions will be crucial for their examination responses.
1st & 2nd April 2025	Art	Component 2 examination.
25th April 2025	French	Speaking and Listening Exam.
TBC	Physical Education	Practical Performance examination.

## P6 REVISION WORKSHOPS

**SCIENCE REVISION**  
MONDAYS from 3:30-4:30pm

**MATHEMATICS REVISION**  
WEDNESDAYS from 3:30-4:30pm

**ENGLISH REVISION**  
THURSDAYS from 3:30-4:30pm

# Exam Information and Support

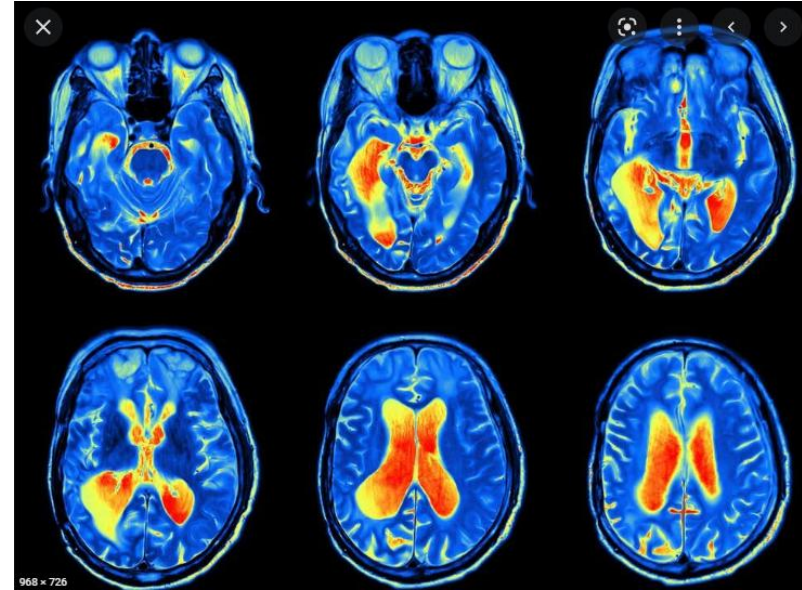




# Simple Strategies @Home

## Exercise

- Blood flow to brain...
- Fire the Neurons
- 20 mins of exercise can improve concentration for 2 hours afterwards



## Communicate

- Talk about what they're studying
- What's going well; what's tricky
- How are they feeling?





# Simple Strategies @Home

## Brain Food!

- Healthy diet & regular fluids!
- Help the brain to work at its best!
- Save the sweet stuff to the end of the revision session!



## Sleep!

- Teenagers and sleep?
- Is it the right kind of sleep?
- “Just one more scroll”



# 6 Benefits of a Good Night's Sleep

by @inner\_drive | www.innerdrive.co.uk

**Better Concentration**

**Better Memory and Recall**

**Aids Creativity**

**Helps You Make Better Decisions**

**Reduced Focus on Negative Things**

**Stronger Immune System**

# When should Year 11 Start Revising?

## Now!

Ideally **two** hours a night.

Monday, Tuesday, Wednesday, Thursday, Sunday

Homework set, GCSEPod & knowledge-based revision.

**“There is never no work to do”**





# What does one revision session look like?



**22 mins**

Little break

**22 mins & Recap**

Little break

**22 mins & Recap**

Little break

**22 mins & Recap**

Little break

**22 mins & Recap**

Little break

**Big Break**





# Revision...

**Homework - it counts as revision!**

**2 Hours of revision, minimum.**

**Monday to Thursday nights & 4 - 6 hrs Sunday.**

- **Period 6 counts as one hour!**

**Lots of revision strategies are available - find one that works for you.**

**You have more than enough time for this and still have time for other things.**



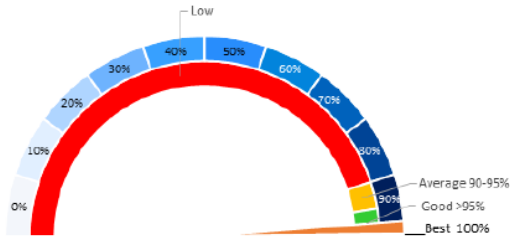
# 2 Students in this room

Both have the same **KS2 Data and Targets**

**Student A** – Average Grade in all subjects is **5.5**

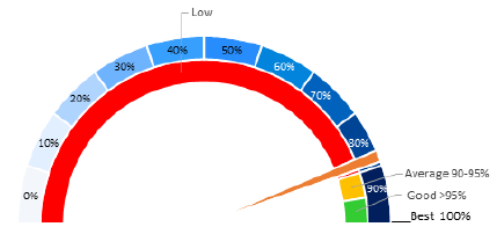
**Student B** – Average Grade is **3.5**

The difference?



Attendance this term: 97.6%

ATTENDANCE %	DAYS LOST	LESSONS MISSED
100%	0 days	0 lessons
97%	1 week	25 lessons
94%	2 weeks	50 lessons
90%	4 weeks	100 lessons
85%	6 weeks	150 lessons
80%	8 weeks	200 lessons



Attendance this term: 87.3%

ATTENDANCE %	DAYS LOST	LESSONS MISSED
100%	0 days	0 lessons
97%	1 week	25 lessons
94%	2 weeks	50 lessons
90%	4 weeks	100 lessons
85%	6 weeks	150 lessons
80%	8 weeks	200 lessons

# Attendance

# YEAR 11 NEA DATES AND SESSIONS



Date	Subject	Information
17th & 18th March 2025	Geography	Fieldwork is a compulsory part of the GCSE geography and history courses and plays a vital role in helping students apply their classroom learning to real-world contexts.
18th March 2025	Drama	Component 2 – Performance from Text.
24th, 26th, & 27th March 2025	Food & Nutrition	Non examination assessment 2. It is important to note that students attend the day which has been assigned to them. Please ensure your child is in attendance and arrives with the correct ingredients and resources needed to be successful.
25th & 31st March 2025	History	It is imperative that students attend the day which has been assigned to them, as the knowledge gained during these sessions will be crucial for their examination responses.
1st & 2nd April 2025	Art	Component 2 examination.
25th April 2025	French	Speaking and Listening Exam.
TBC	Physical Education	Practical Performance examination.

## P6 REVISION WORKSHOPS

**SCIENCE REVISION**  
MONDAYS from 3:30-4:30pm

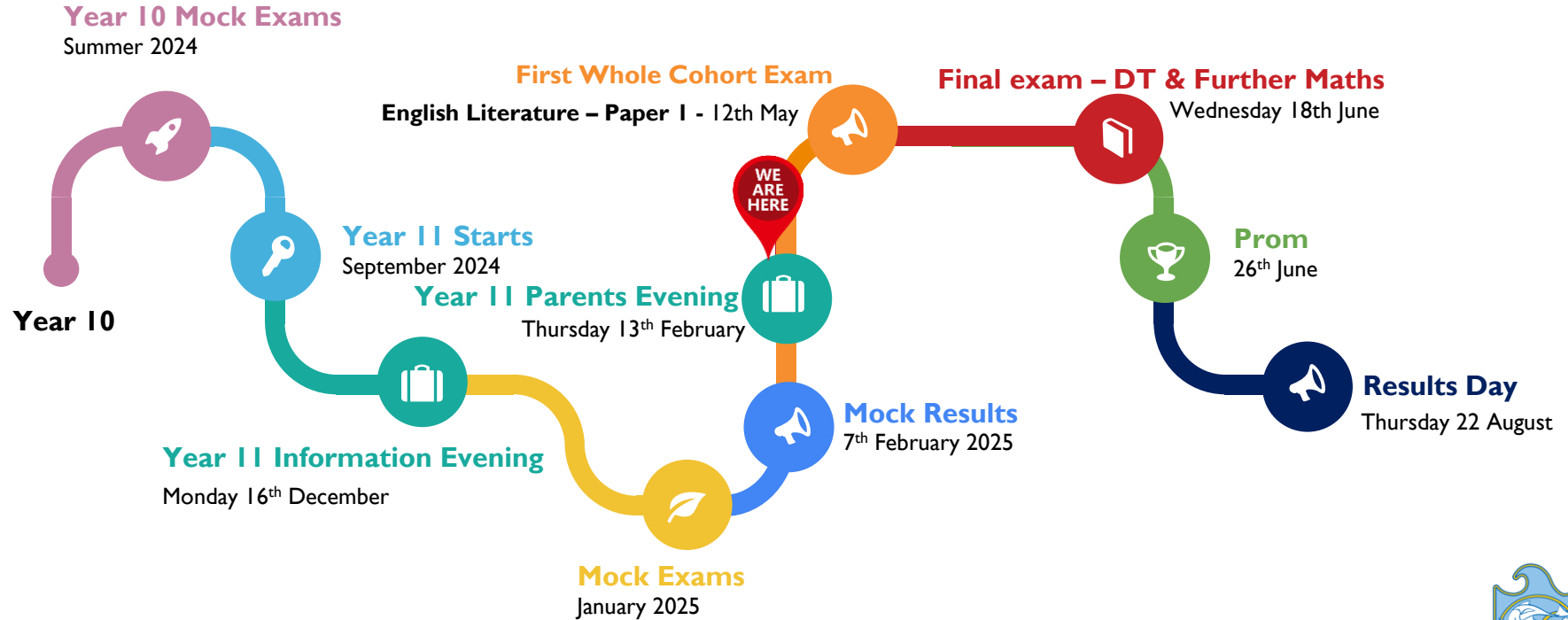
**MATHEMATICS REVISION**  
WEDNESDAYS from 3:30-4:30pm

**ENGLISH REVISION**  
THURSDAYS from 3:30-4:30pm



# The Road Ahead

# Where are we now?



# Now → May 2024

<b>7<sup>th</sup> February (Today)</b>	Mock Examination Results	
<b>13<sup>th</sup> February</b>	Parents Evening	<b>Important you attend!</b>
<b>20<sup>th</sup> February</b>	Half-Tem	<b>Revise and Rest</b>
<b>24<sup>th</sup> February</b>	Return to school (INSET)	<b>Art Exam Workshop</b>
<b>March</b>	<b>Geography / Drama / Food / History / Art / French / PE</b>	<b>NEA and Field Work</b>
<b>5<sup>th</sup> May</b>	School closed - Bank Holiday	4 Day Week
<b>8<sup>th</sup> May</b>	<b>First Exam - Drama</b>	
<b>12<sup>th</sup> May</b>	Full exam session starts	Whole cohort exams (E/M/S/H).
<b>30<sup>th</sup> May</b>	<b>Half Term Revision Sessions</b>	<b>Half Term</b>

# YEAR 11 NEA DATES AND SESSIONS



Date	Subject	Information
17th & 18th March 2025	Geography	Fieldwork is a compulsory part of the GCSE geography and history courses and plays a vital role in helping students apply their classroom learning to real-world contexts.
18th March 2025	Drama	Component 2 – Performance from Text.
24th, 26th, & 27th March 2025	Food & Nutrition	Non examination assessment 2. It is important to note that students attend the day which has been assigned to them. Please ensure your child is in attendance and arrives with the correct ingredients and resources needed to be successful.
25th & 31st March 2025	History	It is imperative that students attend the day which has been assigned to them, as the knowledge gained during these sessions will be crucial for their examination responses.
1st & 2nd April 2025	Art	Component 2 examination.
25th April 2025	French	Speaking and Listening Exam.
TBC	Physical Education	Practical Performance examination.

## P6 REVISION WORKSHOPS

**SCIENCE REVISION**  
MONDAYS from 3:30-4:30pm

**MATHEMATICS REVISION**  
WEDNESDAYS from 3:30-4:30pm

**ENGLISH REVISION**  
THURSDAYS from 3:30-4:30pm

**-19**

**School Days Until  
Mock (January 2025)**

EVERY SECOND COUNTS

**47**

**School Days Until the  
first GCSE (May 2025)**

EVERY SECOND COUNTS

**82**

**School Days Until  
Prom (June 2025)**



EVERY SECOND COUNTS



# End of Year I I- 28th June !

You!



Us!





# Thank you for your time

Please stay if you have any questions

